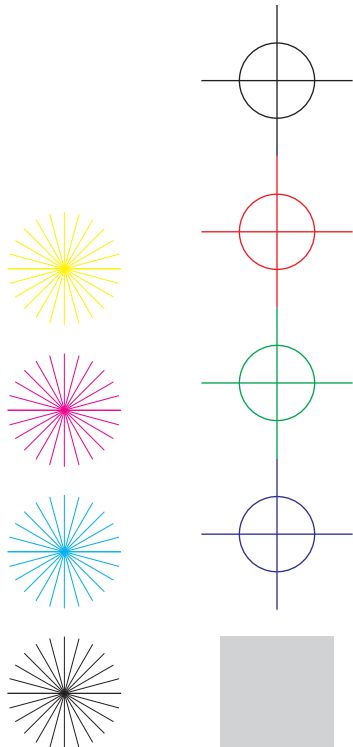
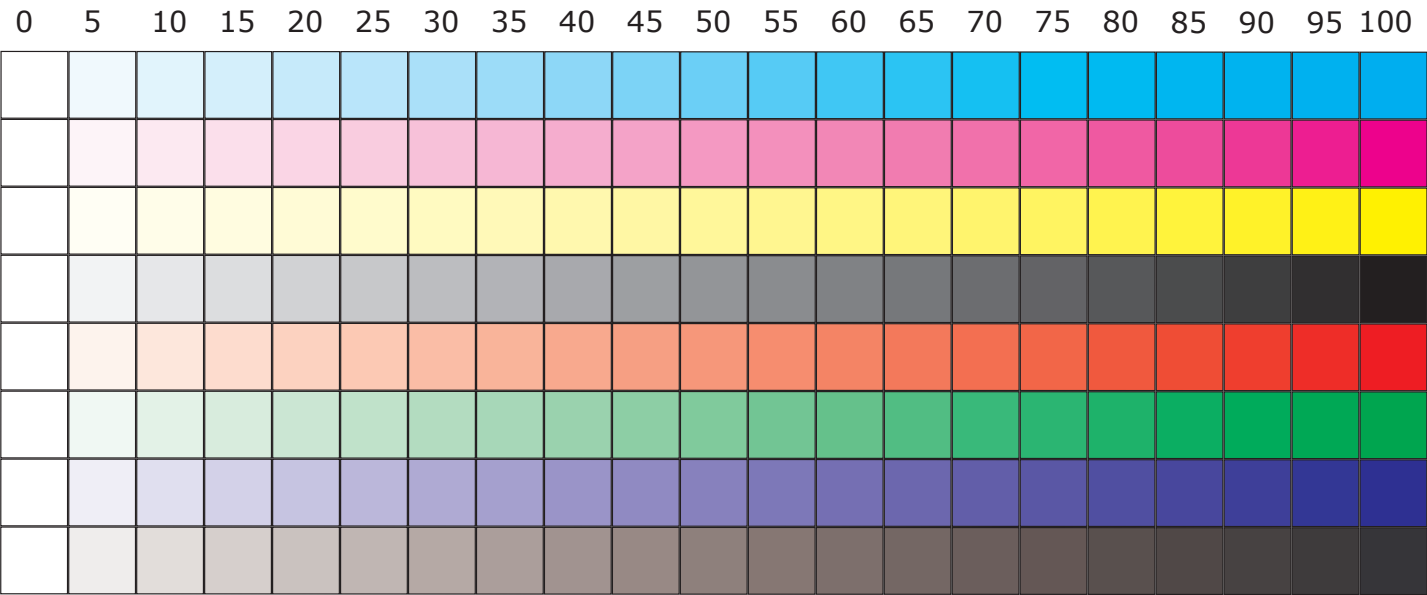
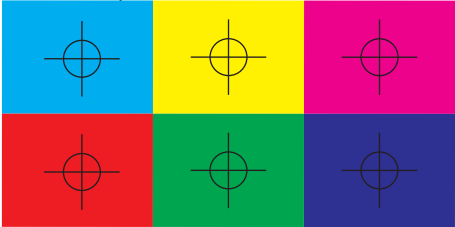


# NRG Group Spain S.A.

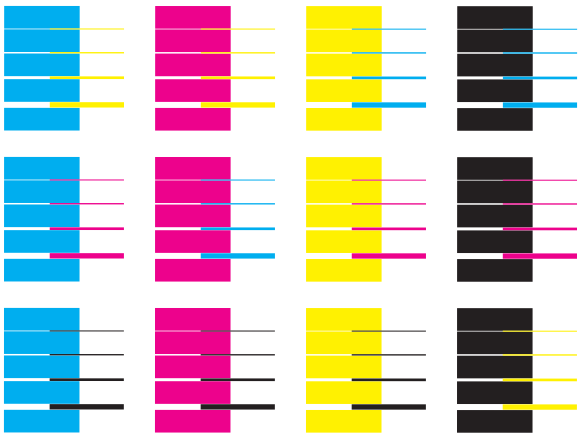
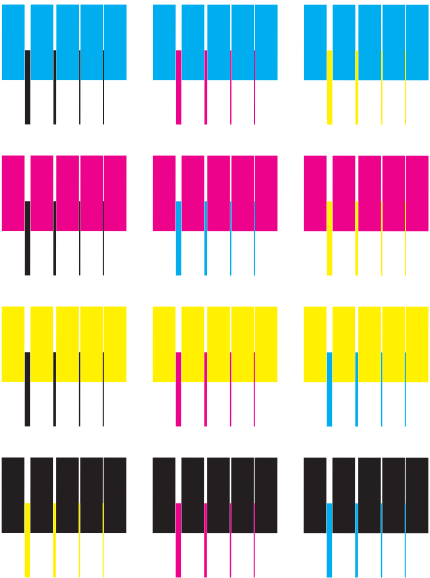
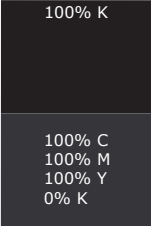
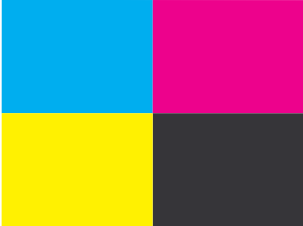
Hoja de test CMYK Versión 1.0



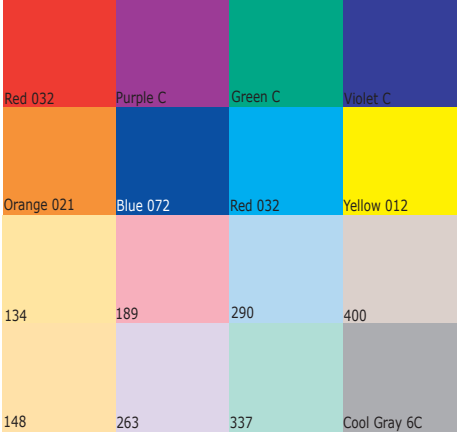
## Black Overprint



## Pantone Process CVC



## Pantones CVC



## RGB (CMY)

The red, green, blue and cyan, magenta, yellow models are closely related, the primary colors of each form the secondary colors of the other. These are also the most representative models for additive and subtractive colors, respectively. RGB is also the basic color model for on-screen display.

**RGB (CMY)**  
The red, green, blue and cyan, magenta, yellow models are closely related, the primary colors of each form the secondary colors of the other. These are also the most representative models for additive and subtractive colors, respectively. RGB is also the basic color model for on-screen display.

**RGB (CMY)**  
The red, green, blue and cyan, magenta, yellow models are closely related, the primary colors of each form the secondary colors of the other. These are also the most representative models for additive and subtractive colors, respectively. RGB is also the basic color model for on-screen display.

## RGB (CMY)

The red, green, blue and cyan, magenta, yellow models are closely related, the primary colors of each form the secondary colors of the other. These are also the most representative models for additive and subtractive colors, respectively. RGB is also the basic color model for on-screen display.

**RGB (CMY)**  
The red, green, blue and cyan, magenta, yellow models are closely related, the primary colors of each form the secondary colors of the other. These are also the most representative models for additive and subtractive colors, respectively. RGB is also the basic color model for on-screen display.

**RGB (CMY)**  
The red, green, blue and cyan, magenta, yellow models are closely related, the primary colors of each form the secondary colors of the other. These are also the most representative models for additive and subtractive colors, respectively. RGB is also the basic color model for on-screen display.

Modelo:	_____
N/S:	_____
Fecha:	_____
Técnico:	_____
Versiones de firmware:	_____
IPU:	_____
Main Board:	_____
Controlador:	_____
MUSIC:	_____
PostScript:	_____
Otros (	_____);
Otros (	_____);
Otros (	_____);
Otros (	_____);

Contador Negro:	_____
Contador Color:	_____
Punteros:	C _ M _ Y _ K _
Valores M/A:	C _ M _ Y _ K _
Tension residual:	_____
Tipo de Driver:	_____
Versión del Driver:	_____
Ajustes del Driver:	_____

Notas :	_____
	_____
	_____
	_____

